

Lilygo T5 4.7" Plus ESP32+Epaper Housing

 **Simon E**

[VIEW IN BROWSER](#)

updated 6. 3. 2023 | published 6. 3. 2023

Summary

Housing for the Lilygo T5 4.7" Plus Epaper module. Important this housing is for the newer Plus Model

[Hobby & Makers](#) > [Electronics](#)

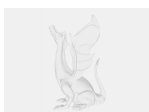
Tags: [epaper](#) [lilygo](#)

Simple housing for the newer Lilygo T5 4.7" Plus Model. The Buttons and connectors are at different locations on this one.

Model files



epaper-deckel.amf



epaper.fcstd



epaper-gehaeuse.amf



epaper-knopf.amf

License

This work is licensed under a
[Creative Commons \(4.0 International License\)](https://creativecommons.org/licenses/by-nc/4.0/)



Attribution-NonCommercial

- ✘ | Sharing without ATTRIBUTION
- ✔ | Remix Culture allowed
- ✘ | Commercial Use
- ✘ | Free Cultural Works
- ✘ | Meets Open Definition